



## Celotex TB4000

Multi-Purpose Insulation Board

**Celotex**  
Insulation Specialists

### Introduction

Celotex TB4000 is a multi-purpose insulation board developed to provide simple solutions for overcoming localised thermal bridges.

With low emissivity foil facings, TB4000 is manufactured from rigid polyisocyanurate (PIR) using a blowing agent that has zero ozone depletion potential (zero ODP) and low global warming potential (GWP). Our 12mm product positions Celotex as the manufacturer of the broadest range of product thicknesses, from 12mm-200mm.

With Celotex TB4000 you are specifying an insulation board that:

- Is suitable for use in a number of applications including roof, wall and floor systems
- Is specifically designed to eliminate thermal bridges
- Achieves an A+ rating when compared to the BRE Green Guide
- Is certified under BBA certificate numbers 95/3197 and 09/4667
- Includes low emissivity foil facings giving improved thermal insulation performance within cavity air spaces
- Provides reliable long-term energy savings for buildings

### Applications

Celotex TB4000 can be specified for use in a variety of applications including:

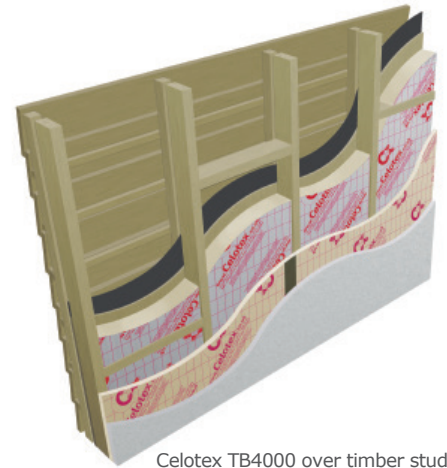
- Pitched roofs
- Flat roofs
- Solid masonry walls
- Timber framed & steel framed systems
- Floors

### Specification Clause

The insulation shall be Celotex TB4000 \_\_\_\_\_mm thick comprising a polyisocyanurate rigid foam insulation core with a thermal conductivity of 0.022 W/mK with low emissivity aluminium foil facings on both sides. Celotex TB4000 is CFC/HCFC free with zero ODP and low GWP and CE marking compliance to BS EN 13165. Celotex TB4000 is manufactured in accordance with quality management system ISO 9001 and environmental management system ISO 14001. Celotex TB4000 achieves an 'A+' rating when compared to the BRE Green Guide. All products must be installed in accordance with instructions issued by Celotex.

### Celotex TB4000 Technical Data

Product Code	Thickness (mm)	R-value (m <sup>2</sup> K/W)	Weight (kg/m <sup>2</sup> )
TB4012	12	0.50	0.50
TB4020	20	0.90	0.72
TB4025	25	1.10	0.85
TB4030	30	1.35	0.98
TB4035	35	1.55	1.11
TB4040	40	1.80	1.26
TB4045	45	2.00	1.40



Celotex TB4000 over timber studs

### Sustainable Insulation

Celotex PIR insulation has been independently assessed by BRE Global and has been accredited with an A+ rating when compared to the BRE Green Guide.

The results also show that Celotex offers a lower environmental impact than other typical PIR manufacturers.

For further information about Celotex' sustainable insulation solutions, visit the sustainability pages of the website at [celotex.co.uk](http://celotex.co.uk)



cont...



## Physical Properties

	Method	TB4000
Compressive strength	BS EN 826	≥120kPa
Dimensional stability	BS EN 1604	DS(TH)8
Water vapour resistance	BS EN 12086: Method B	>150 MNs/g
Thermal conductivity	BS EN 12667	0.022 W/mK
Surface spread of flame	BS 476-7	Class 1

## Typical U-values

U-values will vary depending on application. To calculate a specific U-value, please visit our online U-value calculator at [celotex.co.uk](http://celotex.co.uk)

## Installation Guidelines

Installation of Celotex TB4000 will depend on application type. For full details of the installation of Celotex TB4000, please refer to the 'applications' pages of the website at [celotex.co.uk](http://celotex.co.uk) and select the application of interest.

## Further Information

If you wish to contact Celotex, please visit [celotex.co.uk](http://celotex.co.uk) and click on the 'contact us' page.

For information regarding [storage, installation and handling](#) of Celotex products, or for Health & Safety advice, please refer to the 'literature' pages of the website at [celotex.co.uk](http://celotex.co.uk).

Celotex has a policy of continuous product development and reserves the right to alter product designs or specifications without prior notice.

**Celotex Limited**  
Lady Lane Industrial Estate,  
Hadleigh, Ipswich  
Suffolk IP7 6BA

**T: 01473 820850**  
**W: [celotex.co.uk](http://celotex.co.uk)**